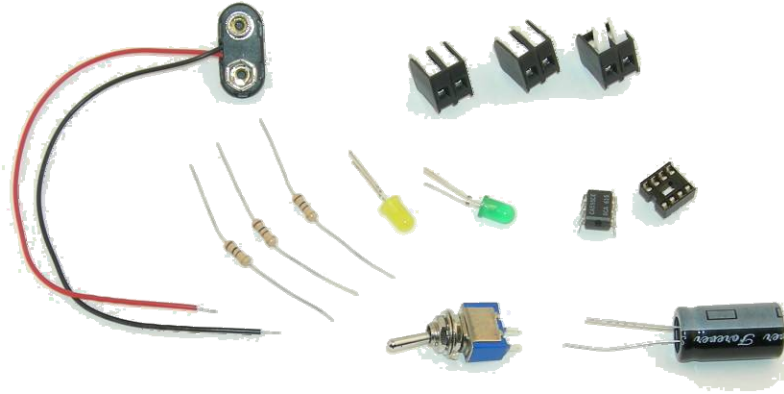


Manufacturing Sequence

555 Monostable Circuit

1. Get all your components.

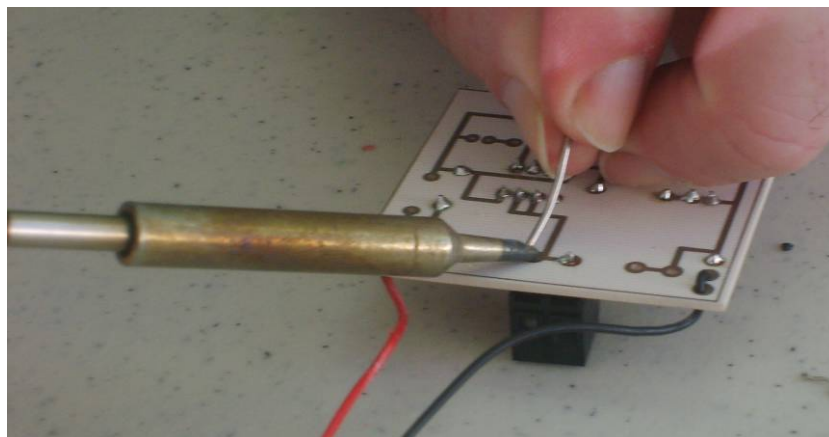


2. Solder the red lead from the battery to the top line and the black lead to the bottom line of the circuit board.

Note the extra loop in the wire to improve strength.

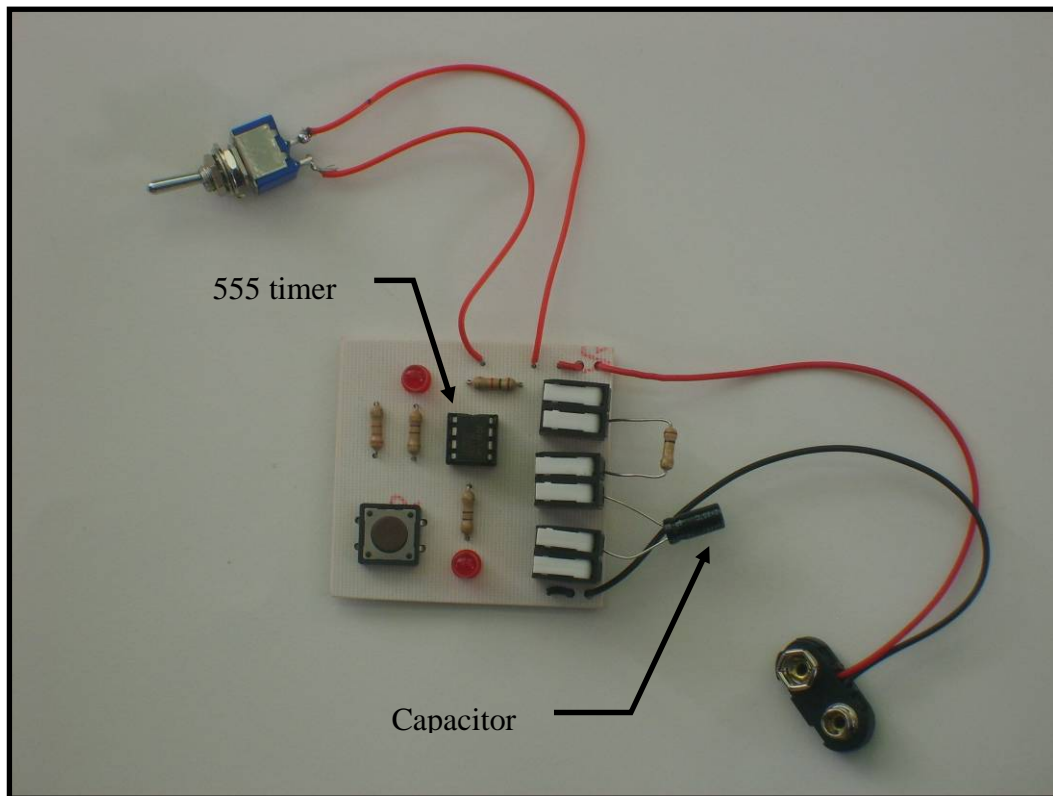


3. Solder in the components in this order: resistors, push switch, IC socket, LEDs, component blocks.

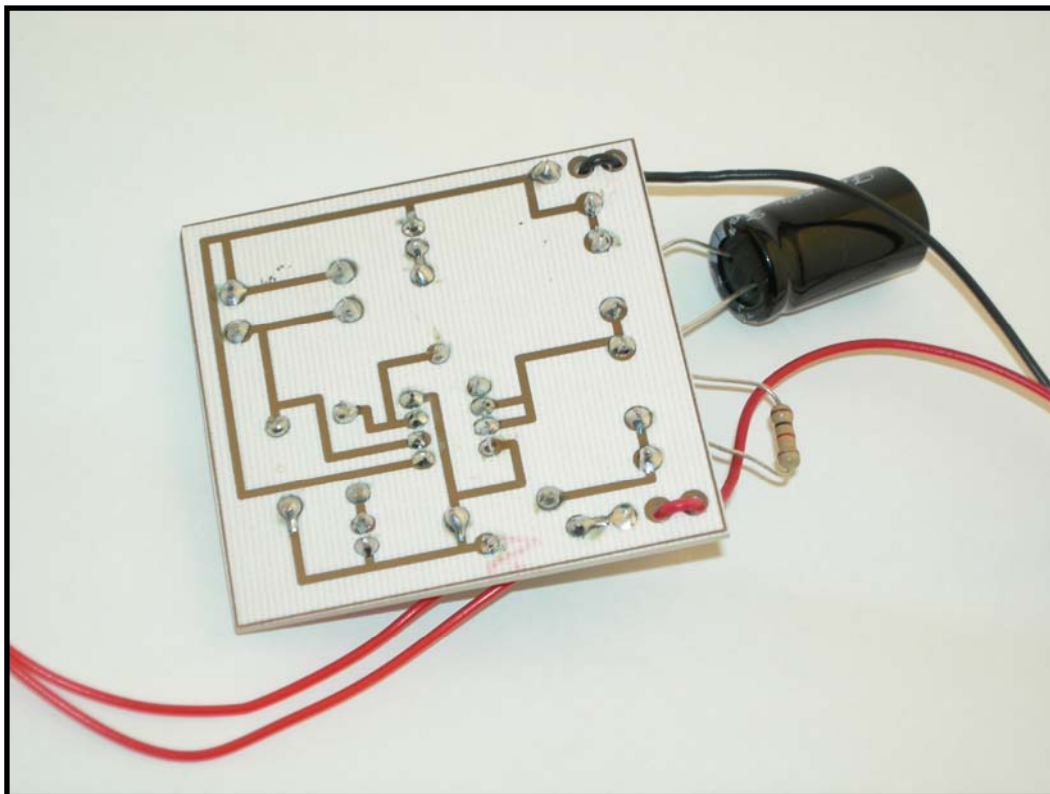


Note: The 555 chip is not soldered as it would be damaged by the heat of the soldering iron. The LEDs must be soldered the correct way round.

The Finished Circuit



View from the component side of the board



View from the solder side of the board